



Hi there, its great to have you on board, I hope you love this software as much as we do here, it will supply you a never ending list of niches to target forever. This software gives you the ability to find niches that no other marketers are targeting, which makes it perfect for complete newbies and long time experienced marketers together.

This software will give newer people to Internet Marketing the ability to find profitable niches FASTER and Experienced Marketers the ability to find those GOLD niches that are not being targeted by others at this ridiculously LOW price, to ensure as many people as possible benefit from it. *The beauty of it, is that 1000's of people can use it and not compete with each other.*

I have sold 1000s of copies of this software over the years, though this software now is so much better than it ever was by Miles. Being able to solve Googles Captures automatically enables so much data to be mined its just incredible. To read about the history of this software, see <http://www.bruteforcekeywordgenerator.com/keywordgeneratorconcept.pdf>

On top of the software you get access to my SEO Fight Club Forum aswell. And hang out with other very successful marketers and newly becoming successful marketers. Remember the only dumb question is that one never asked, so please feel free to ask as many questions as you like, thats what forums are about, helping each other move forward. Your Username and Password was emailed to you via Aweber, please check for this access email, including your junk folders.

If you need any help whatsoever go to my support system
<http://support.bruteforceseo.com>

- [On to the Software itself.](#)
- [Installing Software.](#)
- [Software Instructions.](#)
- [Resources.](#)

On to the Software itself.

[Top](#)

Download the software here

<http://www.BruteForceKeywordGenerator.com/keywordgenerator.zip>

In this zip file

keywordgeneratorinstructions.pdf file (You are reading it now)

keywordgenerator.msi = installation file.

To run this software successfully on your computer, you need these two files below installed on your computer.

1. The most recent version of .NET get it here.

www.microsoft.com/downloads/details.aspx?FamilyId=333325FD-AE52-4E35-B531-508D977D32A6

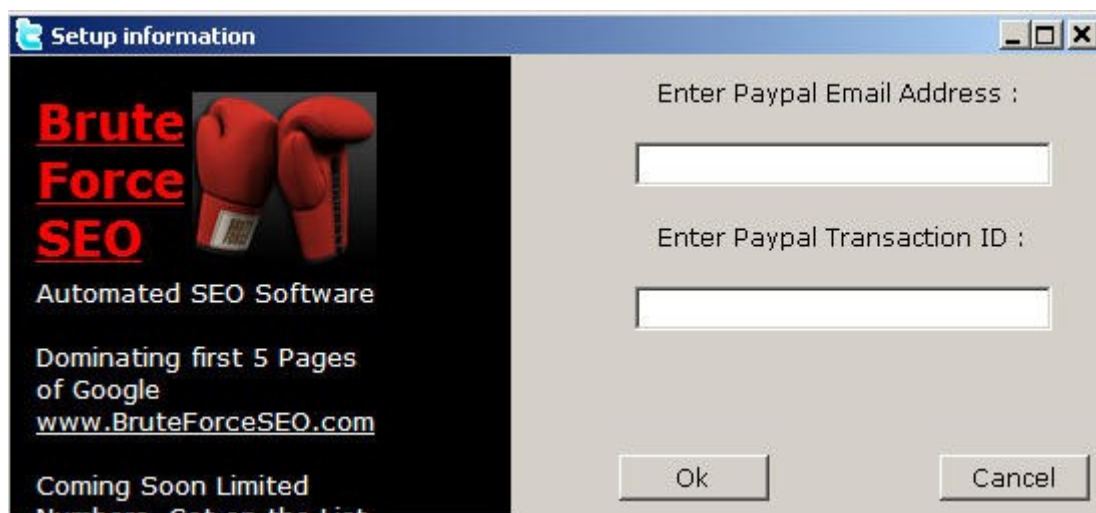
2. You need the latest version of Internet Explorer installed on your computer. This software uses the IE Modules to communicate with the many High PR sites in the software.

<http://www.microsoft.com/windows/internet-explorer/default.aspx> (this is recommended though not 100% required. But best to have the most recent IE on your computer anyway.)

Please install these two above files now.

Then install the software.

Once you have installed the software and start it, you will be presented with this log in screen.



This is where you enter your

1. Paypal Email address .
2. The transaction ID for the \$1 payment. This was supplied to you on the webpage after completing the \$1 trial payment. Or you can log into your Paypal Account, go to the \$1 payment for the trial. Then copy the Transaction ID associated with this \$1 payment. (NOT the subscription ID)

Note: Only one Paypal email address, per trial period. Meaning, you can only take the trial once. If you cancelled and would like to join this membership at a later date, you will need to contact

support www.support.bruteforceseo.com and see if any slots are still open.
Now your software will display this splash screen

and will authenticate itself by connecting to my server then open.
(On the rare occasion the software gets stuck on this screen and will not pass it, this means your computer has software installed that is blocking the software from reaching the internet, such as a firewall or anti viral software, to which you will need to give permission to this software to access the net)

Installing Software.

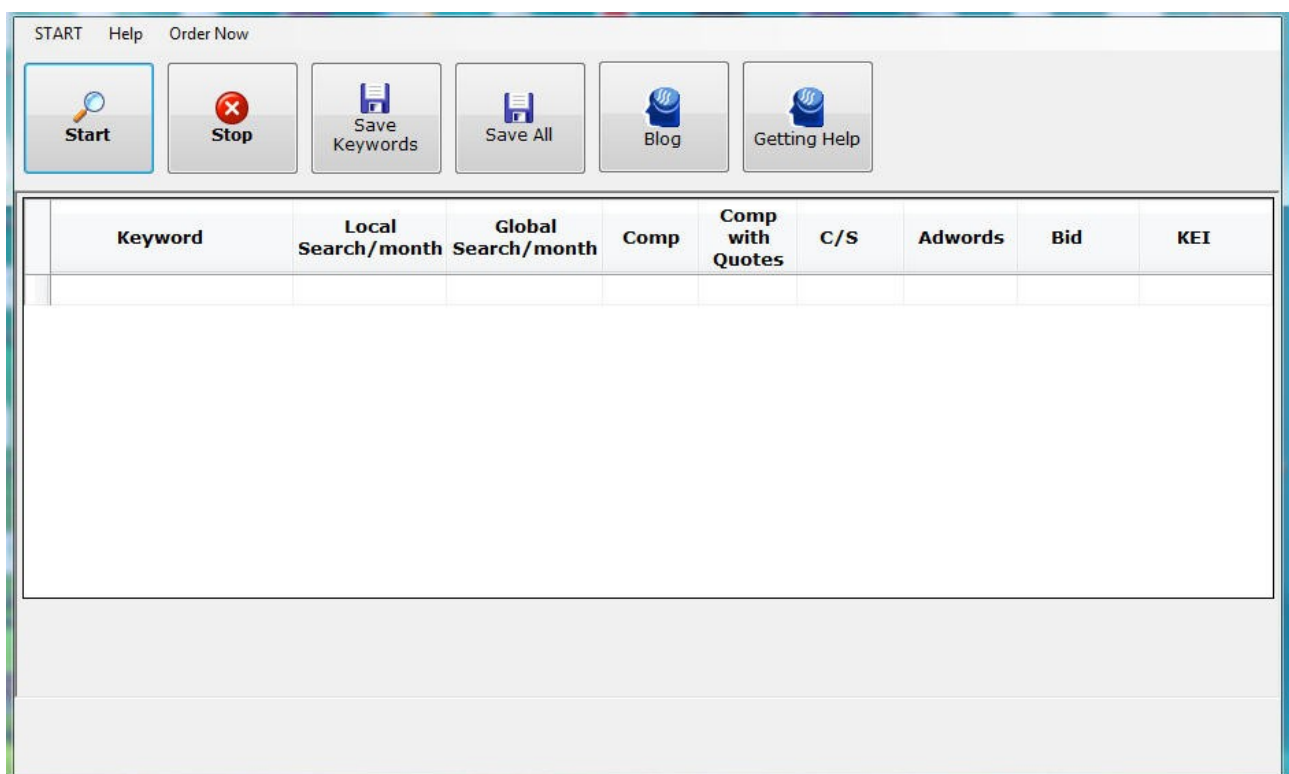
[Top](#)

Click on the keywordgenerator.msi file in the zip, this will install the software to you computer.
There will be a shortcut on your desktop and another under Brute Force SEO in your start bar.

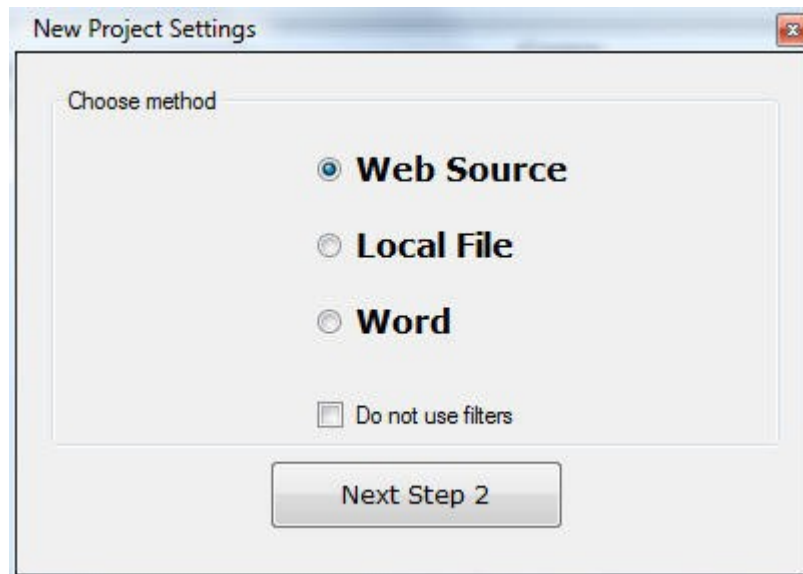
Software Instructions.

[Top](#)

Some sites might not work in web source feature.



Start: Pressing the Start button brings up this window



Here you have 3 choices:

Web Source.

The web source feature allows you to gain keyword phrase data originally collected from any 3rd party website. The software scans this URL you enter, then does some magic and find semantically related keyword phrases to those found on that page and then collects all data for each of these new found terms and provides them in a list. Typically this is around 5000 different results each with their own search volume | competition in google | C/S Score | Amount of Adwords promoting this keyword phrase in Google. | The Bid amount for these Terms in Adwords | The KEI index score

For the software to collect SO much data, this takes hours of time about 4 hours to source the above results for all this data from google. Typically I use this once per day and set the run to go just before I leave the office, with the software doing its work while I'm not here. Then when I arrive I click on the "Save ALL" button to save the results to a text file (with comma's) and then import this into a spreadsheet.

Example of results from one run

<http://www.bruteforcekeywordgenerator.com/keywordgenresults1.html>

Using this feature of the software requires a LOT of requests to Google.com and the free Google Keyword Tool. Google supplies capture entries to view this data, the software automatically does this for you, though immediately after so many queries, to use google.com in your web browser for the next hour or so, you will need to enter capture entries, this typically lasts for 1 or two hours before this is removed again.

This feature was not designed to get targeted niches, though if you enter a content rich wedding website, you will get results with a lot of wedding related keyword phrases. As you can see from my example above, my www.peterdrew.net site is seo related, so there are a lot of seo related terms.

So you can use this feature to find terms related to your niche.

“Web Source” Feature TIPS.

(A) Make sure the URL you enter has a lot of content on this page. You can enter a complete url including directory and internal page URL e.g. <http://www.somesite.com/directory/somepage.html>

(B) URL's that have dynamic content like a blog are excellent for this purpose. Especially a blog with multiple posts on the front page. Then you can come back and use this blog URL again at a later date with fresh content to scan for new keyword phrases.

News URL's are great to get Current topic keyword phrases.

Product sites are great , even better if you can find a URL that lists the most popular products or trends, these sites will update their lists over time. So you can come back to them time and time again to scan fresh results.

Note: While all efforts have been made for this software's spider to be able to scan as many types of pages as possible, its not possible for our spider to understand all website elements that are available, though it will scan roughly 85% of all the pages on the internet. If you get an empty result, please try another URL.

This software will provide you great niches that you'd never have been able to think of by yourself. I know this from seeing the results of this over years. Save each run for future reference, once you find within this group of phrases some nice keyword phrases to target, you can then add this into the software again using the “Word” feature to drill down and find even more related keyword phrases.

Local File

Using the local file you can import a set of keyword phrases from a text file. Then save the results with the data from google beside each phrase.

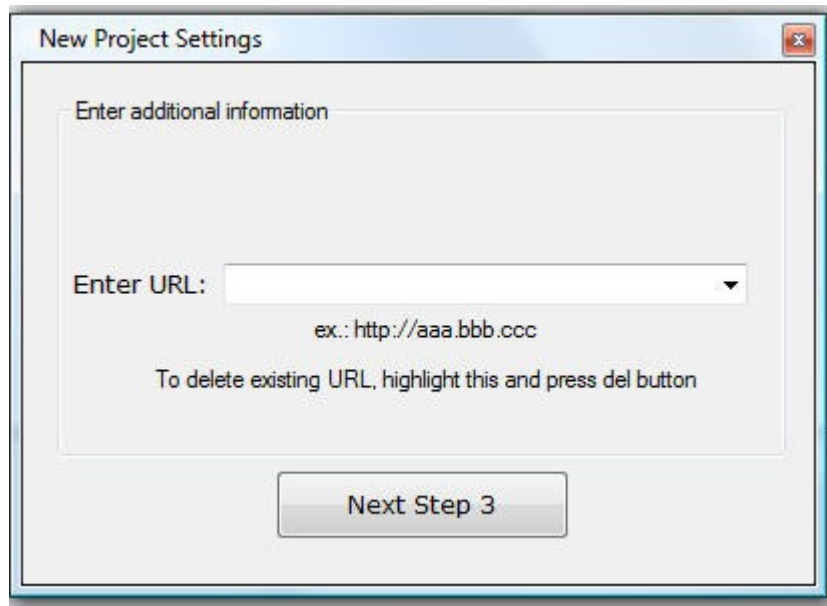
Word

Choosing the word option allows you to enter a keyword or keyword phrase to target. You get best results by entering the least amount of words here. e.g. wedding is better than wedding parties in Ontario

Do not use filters (check box)

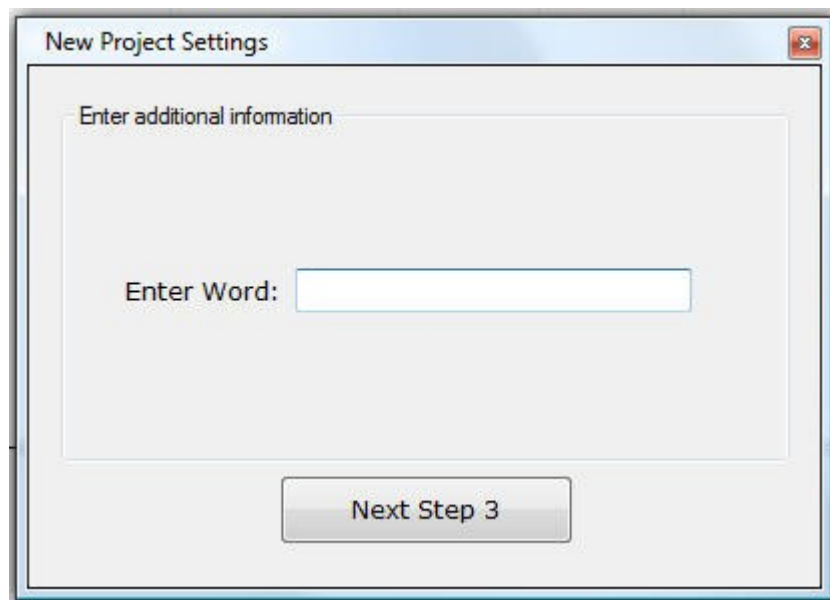
Checking the “Do not use filters box” allows the software to run and then displaying “ALL” results, not limited by filters. This is the BEST way to use the software, especially at the beginning while you are getting used to the software, even with no filter settings, once you have the results, you can then sort each column of data presented by column. **This is how I use the software every time.** I like to see all the results and then sort by different columns, and the best ones rise to the top.

Once you have chosen your selection from the 3 options provided, then click on Next Step 2 button.
If you selected the Web Source Feature



This is where you enter your URL of the site to collect keywords / keyword phrases from.
Each time you enter a URL it is conveniently saved, for future reference so you can go back to these URLs once they have updated their information.

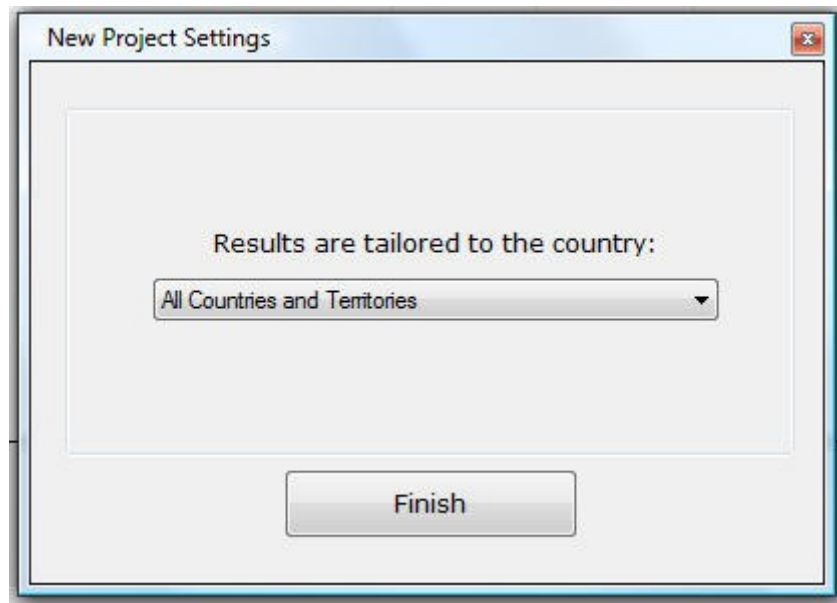
If you selected the Word feature



This is where you enter your top level keyword to then gather 1000's of related keyword phrases all sorted by search volume, competition in google and in quotes and amount of Adwords and Bid

Amounts.

Enter your keyword and click on Next Step 3.



This is where you choose “Where” you want your results to come from.



Here you can choose “all Countries and Territories”

Or

An individual country that is within the list.

At this point I need to point out the advantages of doing Local SEO. e.g. specifically targeting a term in a local google engine. e.g. google.com.au Why? The competition for terms in google.com.au are tiny in comparison to google.com but and its a BIG BUT. We still get backlink love provided from .com sites on the internet to boost our rankings in the local google engines, be they .com.au or any of the other countries. Its a 2 for one bonus, I get my .com.au sites ranking highly in google.com.au PLUS they get listings in Google.com Using my Brute Force Software its very easy to get ranked very highly for these local listings. Its easy in google.com aswell, but that much easier for local search engines.

Local Business Listings are just too easy. MANY of my Brute Force members are doing very well as SEO pros promoting local companies in their respective local google engines. And getting Amazing results. And Very happy clients.

Note: When the software starts, google requires a capture entry, to prove you are human, luckily my Brute Force Keyword Generator is smart enough to resolve these captures for you. This is a good thing, because this software is so powerful and gets results for 1000's of queries, this requires multiple instances of capture entries, so to save you from having to sit there and monitor this, my software does this for you in the background. :)

You will notice in your browser while in google.com that you will be required to manually enter captures to get results from google. Do not worry, this lasts for 1 or 2 hours only.

What each Column represents

Keyword	Local Search/month	Global Search/month	Comp	Comp with Quotes	C/S	Adwords	Bid	KEI
---------	--------------------	---------------------	------	------------------	-----	---------	-----	-----

These are the columns presenting us information, once the keywords are collected you can sort your results by clicking on any of the above columns.

Keyword This column shows the resulting keyword / keyword phrases found by the software.

Local Search / month This column shows you the search queries for the keyword in the results column for the local country that you chose. E.G. If you chose Australia, then this column would display the search volume for this keyword for Australia only.

Global Search / month This column shows you the search volume results for global results from google.com.

Comp This shows the competition in Google.com for the keyword in the results field. e.g how many competitors there are in google.com for this keyword term. OR If you selected a country, these results will be for the country you chose.

Comp with Quotes. This column reveals the keyword phrase in the results column in Quotes in Google, e.g “keyword term” this gives you a better idea of how many other websites are actually targeting this specific phrase in the search engine. (this is the first column I sort by after collecting all results) These results come from the country that you selected.

C/S This is a calculation representing competition in google divided by search volume. So this is an easy way to find great niches, less is better.

Adwords How many Ads there are for this term. More is generally better, but sometimes you'll find a GREAT niche with little to no ads, this means its an Un-Targeted phrase that you can do very well from.

Bid This shows the highest bid amount for this keyword phrase in

Adwords.

KEI

This is a more specific scientific calculation presenting the KEI value of the keyword phrase. Some people love KEI, so we added it. Personally I like going through the results with my own eyes to see the great ones standing out. $KEI = \frac{\text{searches}}{\text{competition}}$ bigger is better in this case.

Note there may be slight variations in the data numbers gathered by this software to what you see in google yourself. This is because the data is collected from a different google data centre and is either in front of your results or behind. Though all this data is coming directly from google itself.

This completes the Instructional PDF , feel free to ask any other questions on the www.SeoFightClub.BruteForceSEO.com forum.

Happy Hunting!!

See my resources below for other PDF's on how to succeed online. Noting you will never find products being pushed in my free PDF's these are all about getting real information out there and helping people reach their potential online.

Petes Free Downloadable Info PDF Reports

33 pages of Petes SEO information

<http://www.bruteforcelinkingloophole.com/BruteForceLinkingLoophole.pdf>

How to find Your Product Online

<http://www.bruteforceseo.com/peteshowto/petesproductshowto.pdf>

Niche research advanced.

<http://www.bruteforcekeywordgenerator.com/keywordgeneratorconcept.pdf>

Petes Products

www.BruteForceKeywordGenerator.com Coming Soon, Test for Only \$1.

Read Above.

www.BruteForceSocialMedia.com Test for Only \$1. What I used to get over 86,000 followers on Twitter.

www.BruteForceLinkingLoophole.com Test for Only \$1. Gain backlinks from over 70 High Pagerank websites, with auto capture solving, gives Amazing results in Google.com

www.BadassRSS.com Test for Only \$1. Submit your RSS feeds to the top 20 RSS Aggregators on the internet.

www.BruteForceSEO.com Test for only \$1. it does EVERYTHING listed Above and MORE.

NOTE: Soon we are releasing **Brute Force Seo "Evolution II"**. It does pretty much everything in a very simple to use Wizard style, and is pretty much AUTO Everything. Auto capture solving, auto email confirming. Just sit back in amazement as it promotes your sites to give you just incredible rankings in Google.com (Get on the list there to be the first to use it before it fills up)

Petes Free Tools

www.Html2rss.com Free, convert your html pages to RSS feeds, convert batches of URL's to RSS feeds.

Free keyword research tools

<http://www.peterdrew.net/freekeywordsearchtool/>

This site lists the Free RSS Aggregators to post to easily.

<http://www.peterdrew.net/socialsiteregistrations/>

Petes Free SEO Tips on Facebook, become a fan to keep updated.

www.facebook.com/seo.tips.peter.drew

www.BadRSS.com Petes Free Rss Aggregator that also allows the creation of Batch RSS feeds, mash your existing rss feeds into one big mash and distribute these new feeds promoting your existing fees. = more link love for your existing feeds.

Petes Affiliate Programs

www.BruteForceKeywordGenerator.com/affiliates/

www.BruteForceSocialMedia.com/affiliates/

Pays 33% of 37.50 Recurring monthly. Paid Instantly Via Paypal.

www.BruteForceLinkingLoophole.com/affiliates/

Pays 33% of 39.50 Recurring monthly. Paid Instantly Via Paypal.

www.BadassRSS.com/affiliates/

Pays 33% of 29.50 Recurring monthly. Paid Instantly Via Paypal.

www.BruteForceSEO.com/affiliates/

1. Pays 33% of 147.00 monthly recurring, Paid Instantly.

2. On 12 month subscription Pays \$370 recurring yearly, Paid Instantly.

All Petes products are a \$1 trial then convert to membership price and convert extremely well. Why wouldn't they? They all work very well and do exactly what it says on the box. :)

Cheers



Peter Drew

<http://www.PeterDrew.net>

<http://www.BruteForceSEO.com>

<http://www.BruteForceLinkingLoophole.com>

<http://www.BruteForceKeywordGenerator.com>

<http://www.BruteForceSocialMedia.com>

<http://www.BadassRSS.com>